

where your relaxing vacation begins



Make your reservation today for a relaxing vacation in the heart of charming Egg Harbor.

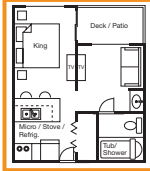
1.800.851.8919 • 920.868.3282  
www.TheLandingResort.com

All suites have a fully-equipped kitchenette or kitchen

### HARBOR

- King Bed
- Sitting Area
- Full Bath
- Counter Bar Dining

Sleeps up to 2

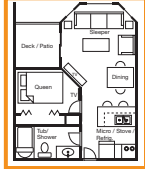


### SPINNAKER/SPINNAKER\*

- Queen Bed
- Full Bath
- Queen Sleeper Sofa
- Table & Chair Dining

Sleeps up to 4.

Unit varies in size, layout & location

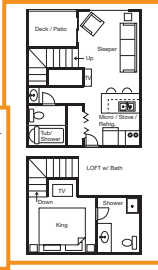
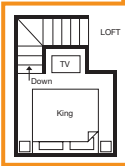


### FLAGSHIP LOFT 1 OR 2 BATH

- King Bed in Loft
- Available in 1 or 2 Baths
- Queen Sleeper Sofa
- Counter Bar Dining

Sleeps up to 4

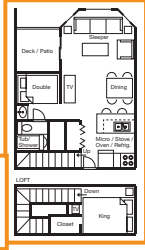
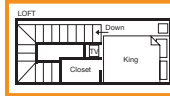
Unit varies in size & layout



### SPINNAKER LOFT/SPINNAKER LOFT\*

- King Bed in Loft
- Double Bed in Semi-Private Alcove
- Full Bath
- Queen Sleeper Sofa
- Table & Chair Dining

Sleeps up to 6



### SPINNAKER LOFT 1.5 BATH \*

- King Bed in Loft
- Double Bed in Semi-Private Alcove
- 1.5 Baths
- Queen Sleeper Sofa
- Table & Chair Dining

Sleeps up to 6



Loft Lower Level: Same as the Spinnaker Loft.

### SPINNAKER LOFT 2 BATH

- King Bed in Loft
- Double Bed in Semi-Private Alcove
- 2 Full Baths
- Queen Sleeper Sofa
- Table & Chair Dining

Sleeps up to 6

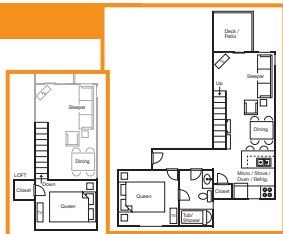


Loft Lower Level: Same as the Spinnaker Loft.

### CAPTAINS LOFT \*

- Queen Bed in Loft
- Queen Bed in Private Bedroom
- Full Bath
- Queen Sofa Sleeper
- Table & Chair Dining

Sleeps up to 6



\* Suites not attached to indoor pool/whirlpool building

Come and enjoy our wooded surroundings and the relaxed ambiance during any season in Door County.

### CAPTAINS LOFT 2 BATH \*

- Queen Bed in Loft
- Queen Bed in Private Bedroom
- 2 Full Baths
- Queen Sofa Sleeper
- Table & Chair Dining

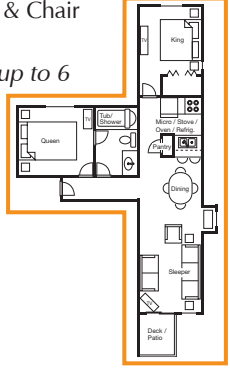
Sleeps up to 6



### NAVIGATOR \*

- King Bed
- Queen Bed
- Full Bath
- Queen Sleeper Sofa
- Table & Chair Dining

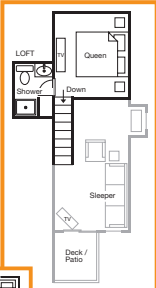
Sleeps up to 6



### NAVIGATOR LOFT 2 BATH \*

- Queen Bed in Loft
- 2 Queen Beds in Private Bedrooms
- 2 Full Baths
- Queen Sofa Sleeper
- Table & Chair Dining

Sleeps up to 8

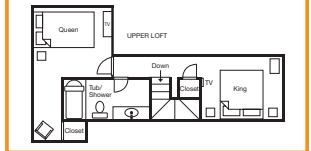
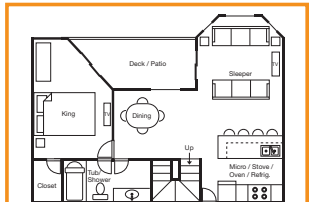


Loft Lower Level: Very similar to the Navigator suite. (Partial view shown to left.)

### ADMIRALS LOFT 2 BATH

- King Bed in Loft
- Queen Bed in Semi-Private Alcove in Loft
- King Bed in Private Bedroom
- 2 Full Baths
- Queen Sofa Sleeper
- Table & Chair Dining

Sleeps up to 8



### booking & cancellation policies

A 5.5% sales tax and a 5.5% room tax will be added to all reservations and a 50% deposit is required at the time of booking. We accept Visa, MasterCard and Discover.

The deposit minus a \$15 cancellation fee will be refunded only upon notice of cancellation received 14 days prior to arrival date. Cancellations made within the 14 days will be refunded minus a \$15 cancellation fee only if we are able to re-rent all nights reserved. There are no refunds on early check-outs. You are responsible for all nights reserved, including "no shows".



Check-In Time 4:00 PM • Check-Out Time 11:00 AM

7741 State Highway 42 • P. O. Box 16  
Egg Harbor, WI 54209